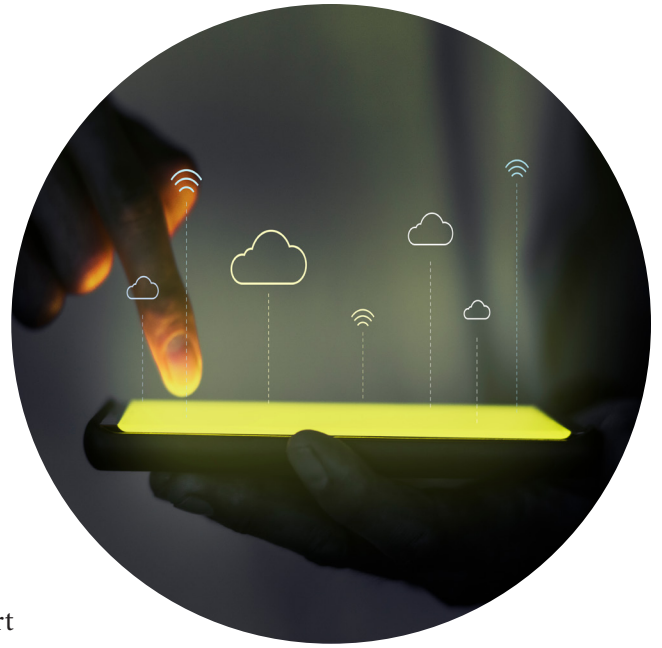


## A Trusted Partnership Between Ntx Embedded And Cypherbridge Systems

In an era where IoT solutions are transforming industries, NTX Embedded and Cypherbridge Systems have joined forces to provide cutting-edge solutions for secure, connected, and scalable IoT devices. This partnership combines NTX Embedded's high-quality hardware and integration services with Cypherbridge's robust security and connectivity software, creating a versatile platform that meets the needs of various industries, including Industrial Control, Medical Devices, Smart



Comprehensive IoT Security



Integrated Platform Support



Lifecycle Support



## Why Choose Us

Achieve IoT excellence with a partnership focused on secure software and dependable hardware, providing you with:

- ✔ **End-to-End Solutions:** From planning and design to deployment and support.
- ✔ **Industry-Leading Security:** Comprehensive protection for IoT devices.
- ✔ **Seamless Connectivity:** Reliable, scalable connections for today's smart solutions.

## IOT Device Solutions Built For Security, Connectivity, and Reliability

Our partnership combines NTX Embedded's robust hardware with Cypherbridge's advanced security software, delivering IoT devices that are secure, scalable, and ready for diverse industry applications. Together, we support every phase of your device's lifecycle—from concept and design to deployment and maintenance.



### Top Benefits of Our Joint Devices

- ✓ **End-to-End Security:** Each device is secured with Cypherbridge's advanced encryption, secure bootloader, and TLS, ensuring data integrity from boot to cloud.
- ✓ **Integrated Connectivity:** Reliable, real-time IoT cloud connectivity enhances device management and data collection, supporting scalable remote monitoring. **Flexible Industrial Use:** Adaptable platform to suit a wide range of industrial applications and needs.
- ✓ **Customizable for Every Industry:** Our solutions cater to specific industry needs, whether it's the precision of industrial automation or compliance requirements in healthcare. **Reliable Supply Chain:** Consistent performance and availability through a robust supply chain.



#### Encrypted Communication & File Transfer

- **TLS 1.3, Modbus, & MQTT Protocols:** Provide encrypted, secure communication channels for real-time IoT telemetry and device management.
- **uSSH, SFTP, & SCP:** Supports secure file transfers, protecting critical data during transmission. **data privacy.**

#### Secure Boot & Data Protection

- **uLoadXL Bootloader:** Ensures secure boot with safe OTA updates.
- **uCrypt Library & uFile Encryption:** Advanced encryption standards protect data both in transit and at rest, ensuring comprehensive data privacy.

#### Remote Management & Access Control

- **uSMTP & uMQTT:** Facilitates secure email and IoT telemetry for effective remote management.
- **IEEE 802.1X & RADIUS Client:** Strengthens access control, ensuring only authorized access across all connected devices. **data privacy.**