



About NTX Embedded

Your Partner in Motors and Control Systems

NTX Embedded is a global leader in designing and manufacturing innovative HMI platforms, motors, and control systems tailored to meet diverse industrial needs. Combining advanced technology with precision engineering, we deliver reliable, high-performance solutions customized to ensure seamless integration and exceptional user satisfaction.

Custom Solutions

Our expertise ensures every motor and controller is custom-built in our manufacturing facility to meet customer needs.

End-to-End Expertise

From design to deployment, we streamline the process to deliver reliable, high-quality solutions.

Rigorous Testing

All products undergo extensive testing to ensure they meet industry standards for performance and durability.



Industrial BLDC Motors

NTX Embedded's BLDC motors are designed to deliver exceptional efficiency, precision, and reliability. With compact designs and rugged durability, these motors excel in harsh environments and meet the stringent demands of industrial applications. They are the ideal solution for applications requiring high-speed velocity control and energy efficiency.

- ✔ **Energy Efficiency**
Operates at 208–240VAC with low power consumption for sustainable performance.
- ✔ **High-Speed Control**
Delivers precise velocity control with speeds up to 7000 RPM.

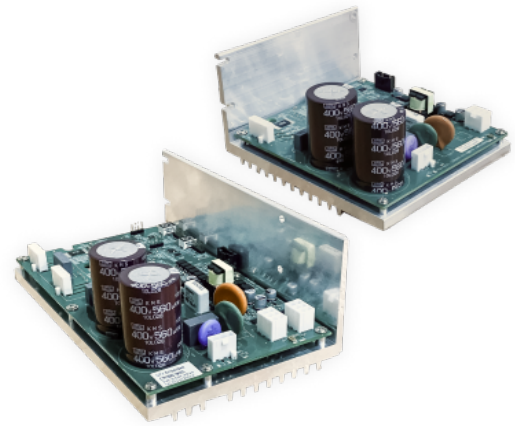
- ✔ **Compact and Efficient**
Optimized for space-constrained environments without compromising performance.
- ✔ **Rugged Durability**
Built with Class-F insulation and 304-grade stainless steel components for long-lasting reliability.

MOTORS AND CONTROLLERS

Built for PerformanceDetail

Single or Dual-Axis Controller

NTX Embedded's motor controllers are engineered to provide fine-tuned control and seamless operation in industrial environments. Available in single or dual-axis configurations, these controllers integrate advanced features to ensure maximum efficiency, accuracy, and reliability.



◆ Precise RPM Control

RPM via 0–10V DC input in 0.5V increments for fine-tuned performance.

◆ Easy Monitoring

LED readout with digitized error codes for quick diagnostics.

◆ Durable Design

Built for harsh environments with vibration resistance and IP-rated protection.

Motor Technical Specifications

- HP Ratings: 1/3 and 1/2 HP
- Insulation : Class-F
- Voltage: 208–240VAC, single-phase
- Speed Rating: Up To 7000 RPM
- Operating Temperature: 10°C–50°C
- Frame Height: Low-profile 50.30 mm design

Motor Certification

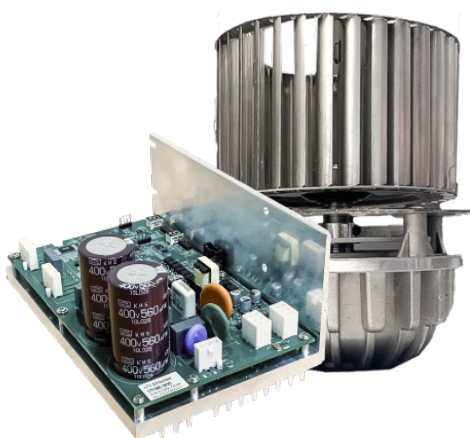
- UL: 1004-1
- UL: 1004-3

Controller Technical Specifications

- Configurations: Single-axis and dual-axis options
- Input Voltage: 0–10V DC with 0.5V increments for precise RPM adjustments.
- Diagnostics: LED indicators for real-time feedback and error identification
- Control Flexibility: Supports factory-programmed RPM settings tailored to customer requirements.

Controller Certification

- UL: 60730-1
- CSA: E60730-1



Why NTX Embedded: Precision and Reliability

NTX Embedded delivers integrated motor and controller solutions with advanced manufacturing and expert support, ensuring reliable performance and exceptional customer service for industrial applications.

- **Seamless Integration:** Motors and controllers work together for optimal performance and reliability.
- **Tailored Precision:** Advanced designs meet unique customer needs with accuracy.
- **Exceptional Durability:** Built to endure harsh environments with rigorous quality assurance.